

# AIRLINK™ PINPOINT XT MOBILE TRACKING DEVICE FOR CDMA NETWORKS

## KEY FEATURES

### ■ Markets

Fleet Management  
Automatic Vehicle Location (AVL)  
Field Service  
Public Safety

### ■ Product Features

Embedded Intelligence  
I/O Ports  
Mil Spec Certified  
Low Power Mode  
Compact Design

### ■ Product Benefits

Persistent Network Connectivity  
Rugged for Extreme Environments  
Extensive Vehicle Telemetry  
Remote Management and Configuration

## TECHNICAL SPECIFICATIONS

### ■ Technology

CDMA 1xRTT

### ■ Bands

800 Mhz Cellular  
1900 Mhz PCS

### ■ Environmental

Operating Temperature:  
-30° to 70° Celsius  
Storage Temperature:  
-40° to 85° Celsius

### ■ Power Consumption: (@12V DC)

Transmit/Receive (Typical/Max): 180/200 mA  
Idle 169 mA  
Low Power Mode 85 mA  
Input Voltage 9 - 28V DC

### ■ Standards/Approvals

FCC  
Industry Canada  
Carrier specific approvals  
RoHS compliant

### ■ Host Interfaces

USB 2.0 (Mini-B5)  
I/O: 3 Digital, 4 Analog, 2 Relay  
Antenna Connection:  
RF - 50 Ohm SMA  
GPS - 50 Ohm SMA  
RS-232: with adapter cable  
(300 - 115200 baud)

### ■ Dimensions

76mm x 25mm x 112mm  
317 grams

### ■ Application Interfaces

TCP/IP, UDP/IP, DHCP, HTTP, SNMP,  
SMTP, SMS, MSCI, NMEA, TAIP, GPS  
Binary

### ■ LED Indicators

GPS  
Network  
Power

### ■ For More Information

#### North America and Asia

Tel: +1 510 624 4200

Fax: +1 510 624 4299

#### Europe

Tel: +44 20 8 622 3015

Fax: +44 20 8 622 3206

#### E-mail:

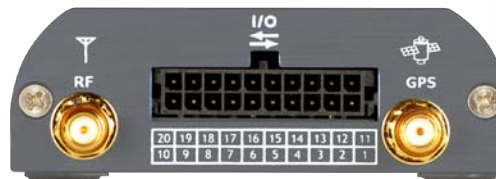
MobileandM2MSales@sierrawireless.com

Web site: [www.sierrawireless.com](http://www.sierrawireless.com)

Sierra Wireless, the Sierra Wireless logo, and the red wave design are trademarks of Sierra Wireless. Heart of the Wireless Machine and AirLink are registered trademarks of Sierra Wireless. Other registered trademarks that appear on this package are the property of the respective owners.

© 2008 Sierra Wireless, Inc.

P/N 2150140 rev 1.0



## SIERRA WIRELESS, CONNECTING PEOPLE AND SYSTEMS TO MOBILE BROADBAND NETWORKS AROUND THE WORLD

Sierra Wireless modems and software connect people all over the world with mobile broadband networks that keep them in touch, informed, and productive from wherever they need to be. The Company offers a diverse product portfolio addressing enterprise, consumer, original equipment manufacturer, machine-to-machine, and specialized vertical industry markets. Sierra Wireless also provides professional services to customers requiring expertise in wireless design, integration, and carrier certification.

For more information, please visit our website, [www.sierrawireless.com](http://www.sierrawireless.com).

SIERRA WIRELESS  
**AIRLINK™ PINPOINT XT**  
(CDMA NETWORKS)

Manage your fleet

Increase efficiency

Improve your business



# AIRLINK™ PINPOINT XT MOBILE TRACKING DEVICE FOR CDMA NETWORKS

## ■ Intelligent Tracking

Powered by ALEOS™ technology, the PinPoint XT is a powerful, cost effective vehicle tracking and asset management platform. The 16-channel GPS receiver constantly computes the vehicle location. Position reports are transmitted over the cellular data network based on time and/or distance. ALEOS offers multiple interface options for simple integration with third party applications. Flexible I/O capabilities also enable remote vehicle instrumentation, making the Pinpoint XT ideally suited for a broad range of fleet management, real-time dispatch, and AVL applications.

## ■ Exception Based Reporting

The PinPoint XT is embedded with a sophisticated exception based events reporting engine. By utilizing an intuitive user interface a fleet administrator can select what data to collect and have the information sent via several methods, including e-Mail and SMS.

## ■ The ALEOS™ Advantage

ALEOS, the embedded core technology available only from Sierra Wireless, simplifies installation, operation and maintenance of any solution, and provides an always-on, always-aware intelligent connection for mission-critical applications. Benefits of ALEOS include:

- Persistent Network Connectivity
- Real-Time Notification
- Over-The-Air (OTA) Upgrades
- Wireless Optimized TCP/IP
- Event Reporting
- Packet Level Diagnostics
- Device Management & Control
- Remote Applications Protocol

## ■ AceWare™ Device Management

AceWare, the Sierra Wireless suite of tools and utilities, leveraging the intelligence of ALEOS, simplifies deployment as well as remote monitoring, control and management of the entire wireless solution.

### AceManager

Remote device configuration and management tool.

- Network Connectivity, Throughput and Signal Strength
- Real-Time Device Status and Health
- Comprehensive OTA Device Configuration and Firmware Updates
- Events Reporting Interface

### AceNet

Enterprise-grade device management application.

- One-to-Many Device Configuration and Management
- OTA Parameter Settings and Firmware/PRL Updates
- Logs Performance Statistics
- Charts Modem Behavior for Performance Analysis

### AceView

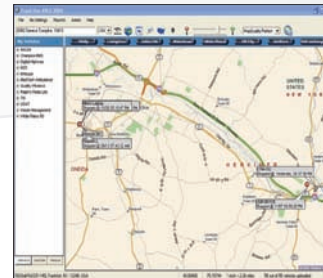
Efficient status and connection monitoring application.

- Low-Profile, Easy-To-Read, On-Screen User-Interface
- Modem Status, Connectivity, Signal Strength
- GPS Signal and Mapping

## ■ Sierra Wireless Reliability And Support

Sierra Wireless has over 13 years experience and a solid reputation for high quality data products backed by a dedicated field and call center support team. For customers, the AirLink™ brand means reliable, intelligent data devices that enable enterprise customers to enhance their operations while reducing costs and increasing revenues.

Applications	
✓	Fleet Management
✓	Automatic Vehicle Location
✓	Asset Tracking
✓	Vehicle Telemetry



POWERED BY: ™